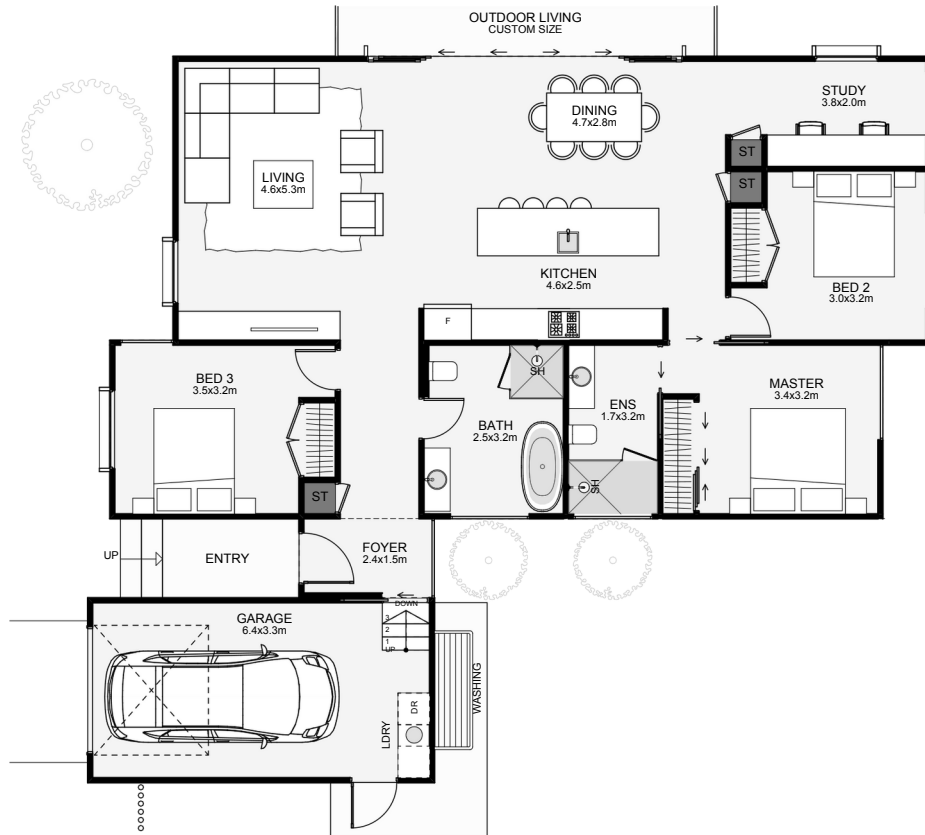




Triple gables, stained timber cladding and privacy louvres make this prefab appear like a full architectural home. Working from home also couldn't be better, with a long north facing study! Both bathrooms and kitchen are positioned back to back for simple, centralised plumbing. Prefab's don't have to be boring, especially when they're like this!



**Prefab Area: 131m<sup>2</sup> Garage Area: 23m<sup>2</sup> Total Area: 154m<sup>2</sup>**

 1
  3+
  2
  1
  23.2m
  16.8m

Contact us:

Ph: 021 242 8866

E: [hello@pavillionhomes.co.nz](mailto:hello@pavillionhomes.co.nz)